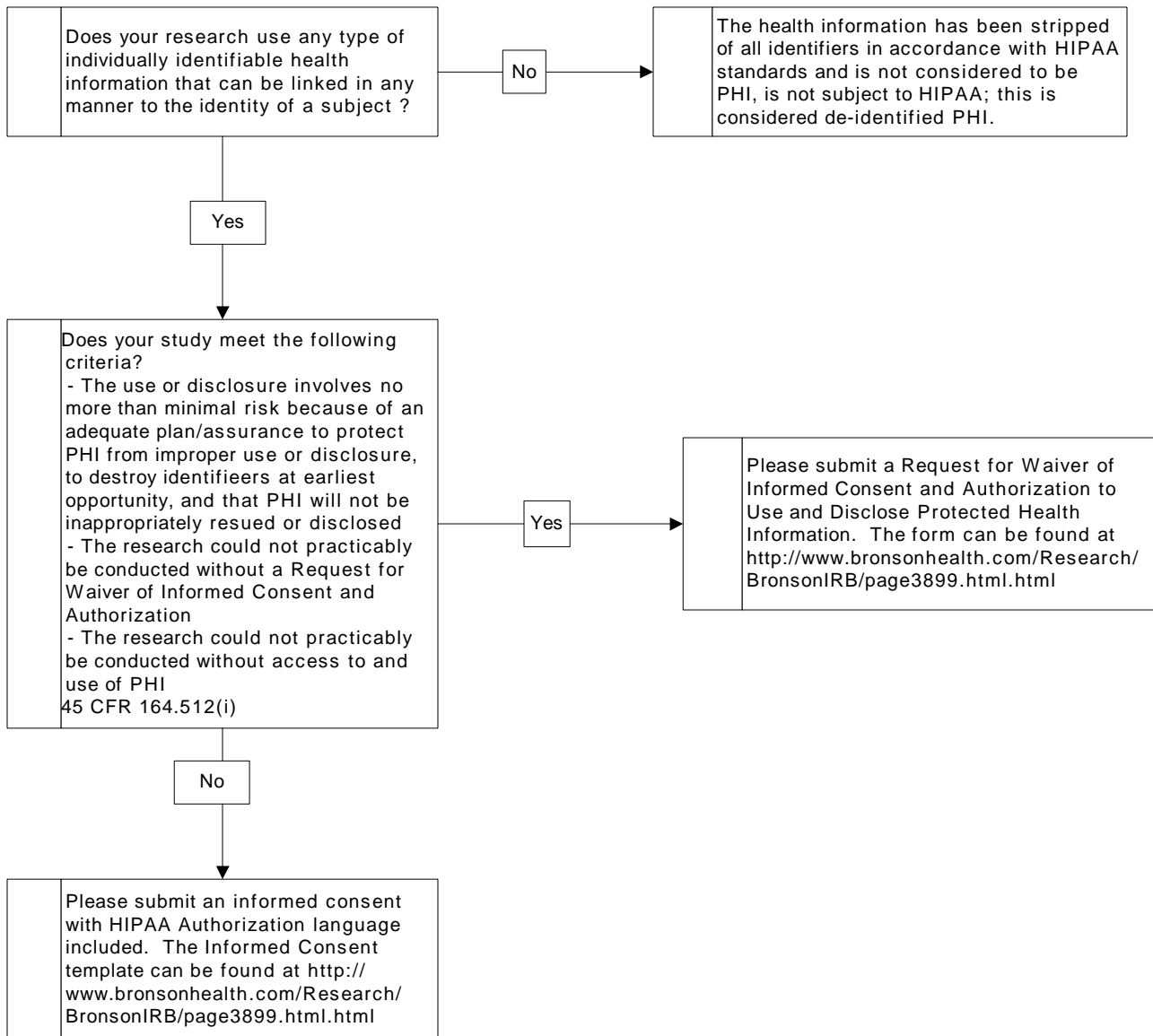


Decision Tree for HIPAA in Research



Definitions:

PHI - Protected Health Information is any individually identifiable health information that is created or maintained by a Covered Entity

Covered Entity - Hospital; health care provider (physician, community clinic, social services agency, practitioner in psychology/psychotherapy/social work); health insurer, HMO, health plan; and/or health care clearinghouse.